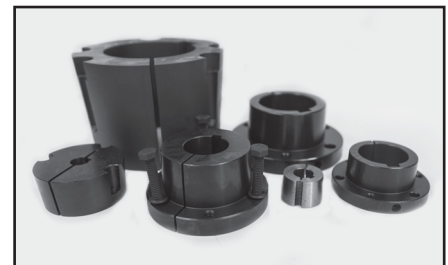
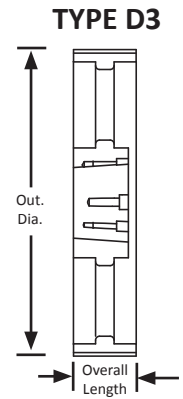
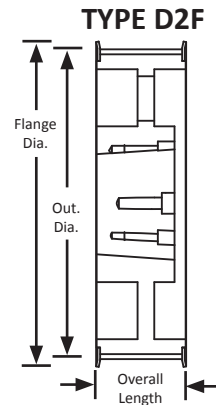
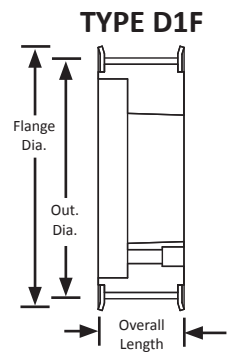
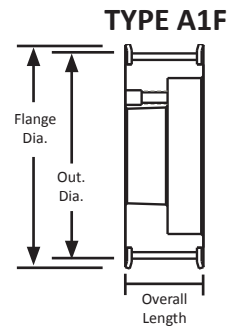


POWERHOUSE™ HTD®**TIMING PULLEYS****14 mm Pitch****For 85 mm Wide Belts****Iron****Black Oxide Plating**

Part Number	No. of Teeth	Type	Pitch Dia. (in)	Out. Dia. (in)	Flange Dia. (in)	Bore / Bushing	Face Width (in)	Overall Length (in)
28-14M85-6FS13	28	D1F	4.912	4.802	5.560	1.250"	4.000	4.000
29-14M85-6FS13	29	D1F	5.088	4.963	5.560	1.250"	4.000	4.000
30-14M85-6FS13	30	D1F	5.263	5.157	6.130	1.250"	4.000	4.000
QD30-14M-85	30	A1F	5.293	5.157	6.130	SK	4.000	4.000
32-14M85-6FS13	32	D1F	5.614	5.507	6.130	1.250"	4.000	4.000
QD32-14M-85	32	A1F	5.614	5.507	6.130	SK	4.000	4.000
34-14M85-6FS13	34	D1F	5.965	5.858	6.500	1.250"	4.000	4.000
QD34-14M-85	34	A1F	5.965	5.858	6.130	SK	4.000	4.000
QD36-14M-85	36	A1F	6.316	6.206	6.810	SF	4.000	4.000
QD38-14M-85	38	A1F	6.667	6.557	7.160	SF	4.000	4.000
QD40-14M-85	40	A1F	7.018	6.909	7.500	SF	4.000	4.000
QD44-14M-85	44	A1F	7.720	7.610	8.220	E	4.000	4.000
QD48-14M-85	48	A1F	8.421	8.311	8.940	E	4.000	4.000
QD52-14M-85	52	A1F	9.123	9.013	9.690	E	4.000	4.000
QD56-14M-85	56	D1F	9.825	9.715	10.360	F	4.000	4.000
QD60-14M-85	60	D1F	10.527	10.417	11.060	F	4.000	4.000
QD64-14M-85	64	D1F	11.229	11.119	11.750	F	4.000	4.000
QD68-14M-85	68	D2F	11.930	11.820	12.500	F	4.000	4.000
QD72-14M-85	72	D2F	12.632	12.522	13.190	F	4.000	4.000
QD80-14M-85	80	D2F	14.036	13.926	14.630	F	4.000	4.000
QD90-14M-85	90	D3	15.790	15.680	-	F	4.000	4.000
QD112-14M-85	112	D3	19.650	19.540	-	F	4.000	4.000
QD144-14M-85	144	D3	25.264	25.154	-	F	4.000	4.000
QD168-14M-85	168	D3	29.475	29.365	-	J	4.000	4.000
QD192-14M-85	192	D3	33.686	33.576	-	J	4.000	4.000
QD216-14M-85	216	D3	37.786	37.786	-	J	4.000	4.000



For matching QD® bushings,
see page 324